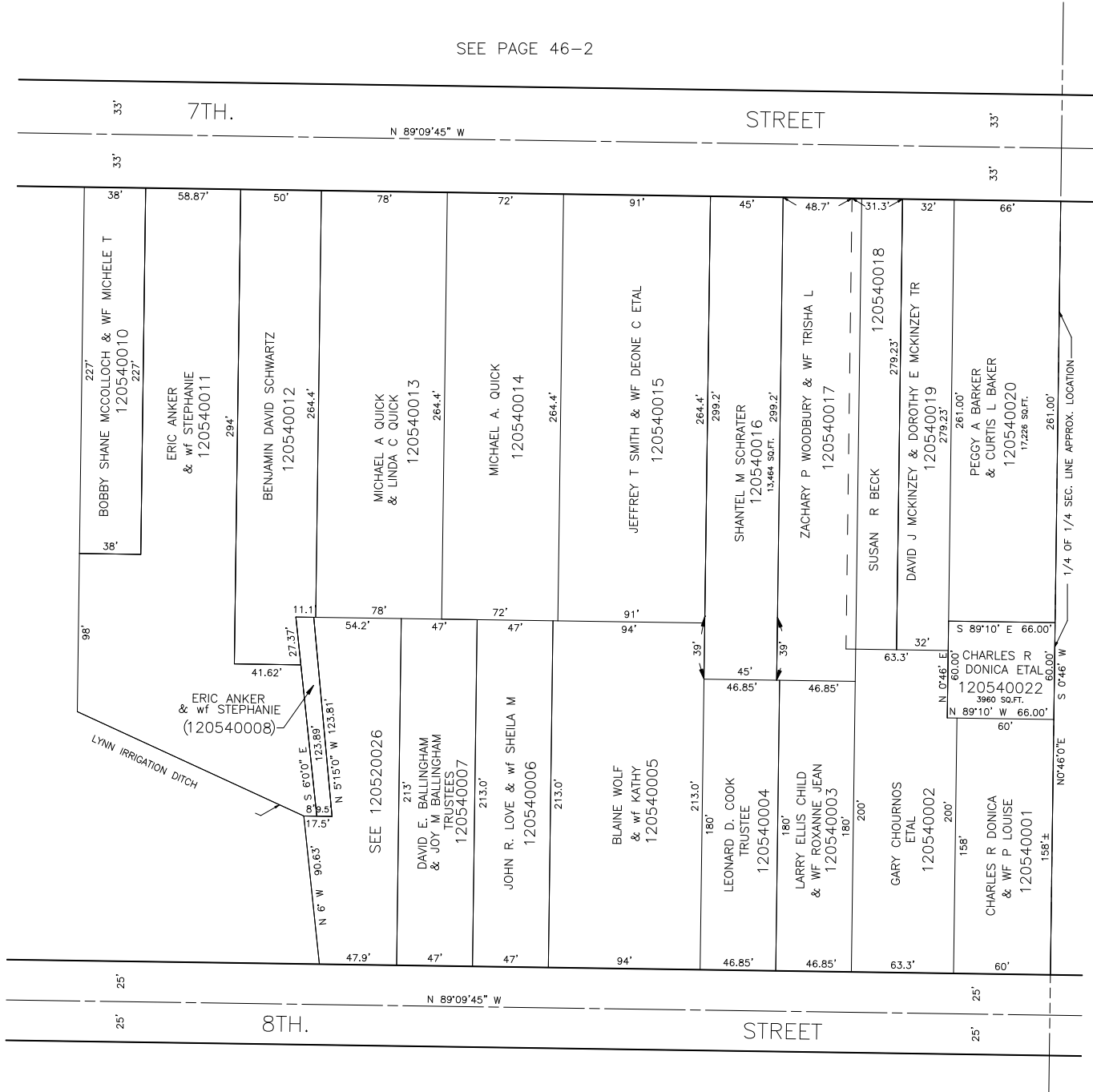


PART OF THE S.W. 1/4 OF THE S.W. 1/4 OF
SECTION 16, T.6N., R.1W., S.L.B. & M.

IN OGDEN CITY
SCALE 1" = 50'

TAXING UNIT: 25

SEE PAGE 46-2



SEE PAGE 55

SEE PAGE 49-3

SEE PAGE 52